

PowerWalker VI 1000T/HID

Line-Interactive UPS

1000VA Line-Interactive UPS with pure Sine Wave

8 IEC Outlets, Phone/Network surge protection with TVSS

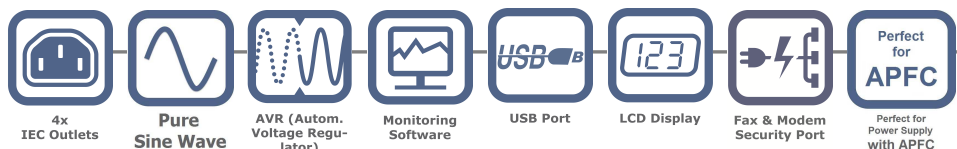
USB Connection for monitoring, HID compatible

LCD display for status view

Built-in boost and buck AVR function



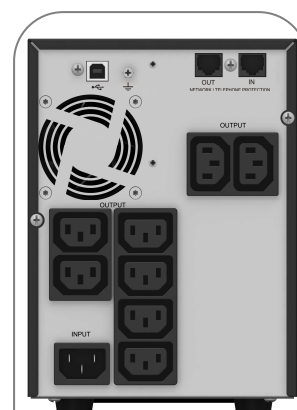
Item-No. 10121008



Product Features

PowerWalker VI 1000T/HID is a Line-Interactive UPS with pure sine wave output and designed for fulfilling high quality power protection demand. It offers a pure sine wave output for smooth operation even in battery mode. A HID compatible USB port allows monitoring basic UPS status on Windows, Mac OS, Linux systems without installing additional software. HID Power Devices are supported by computer OS's internal power management originally. This also makes this model best choice for all equipment that is not suitable for installing monitoring software but supports USB-HID like NAS, HID compatible surveillance video recording systems, ATM etc. With its compact foot print PowerWalker VI1000T/HID fits easily into small spaces such as ATM, Kiosks, narrow industrial and office applications.

- Pure sine wave output for smooth operation in battery mode
- Monitoring software included
- HID-compliant USB port
- High conversion efficiency results in energy saving
- Equipped with Boost and Buck AVR to stabilize output voltage
- 50/60 Hz frequency input (auto sensing)
- Auto restart while AC recovery
- Self-Monitoring and Fault Diagnosis
- Easy, user replaceable, battery design
- Optional: MBS, ATS



Backside:
USB, 8x IEC outlets,
RJ45 surge protection,

Backup time
(Half SPS Load)
11 min

More details
will follow

Technical Details

Product Features

Capacity	1000VA/700W
-----------------	-------------

Input

Voltage	220/230/240VAC
Input Voltage Range	184-276VAC (AVR Range for 230V)
Frequency Range	50/60Hz \pm 5Hz% for normal mode, autosensing

Output

Voltage	220/230/240VAC
Voltage Regulation	- 10%/+6% of nominal voltage range (Line mode)
Frequency	50 or 60Hz depending on input frequency
Waveform	Pure Sine Wave

Overload Rating

Line Mode	105% - 120% shutdown after 5min 120% - 150% shutdown after 10s \geq 150% shutdown after 1s
Battery Mode	105% - 110% shutdown after 10s \geq 110% shutdown after 1s

Transfer Time

Typical	3-7ms Typical, 10ms max;
----------------	--------------------------

Battery

Type	12V / 7Ah
Quantity	2
Recharge Time	3h to 90% after discharged

LCD Display

Indicators	AC mode, AVR, Battery mode, Fault alarm, Load level, Battery capacity, Input voltage, Output voltage, Overload alarm, Low battery alarm
-------------------	---

Audio Indicators

- Back up mode	Sounding every 10 seconds
- Battery low	Sounding every 3 seconds
- Overload	Sounding every 3 seconds
- Charge fault	Sounding every 1 second
- AVR fault	Sounding every 1 second
- Battery fault	Sounding every 1 second

Connections

Connection	USB (HID compliant)
Outlets	8x IEC
Surge Protection	RJ45 (in/out)

Software & System Requirements

Software	WinPower
Operating System	For details visit: http://www.powerwalker.com/winpower.html

Product Details

Dimensions (LxWxH)	340 x 150 x 209 mm
Colour	Black
Weight	10.5kg
Fan Control	Automatic
Noise Level	< 40dB (<45dB in battery mode)
Model Code	VI 1000T/HID

Environment

Temperature	0°C – 40°C
Humidity	0 - 90% (non-condensing)

Package Content

Package Content	PowerWalker VI 1000T/HID, Input Power Cord, 1x IEC cable, USB cable, Software CD, Manual
------------------------	--

Optional Accessories

See next page

Logistic Data

Giftbox Language	EN/DE/FR/PL/IT/ES/SE/RU/FI/BG/CZ/UA/NO/PT/KZ/HR/BY/TR/HU/RS
Manual Language	EN
Dimension/Giftbox	476 x 238 x 308 mm
Weight/Giftbox	11.0 kg
Pieces/carton	1
Pieces/pallet	42
BlueWalker Item-No.	10121008
EAN	4260074976649
Warranty	24 Months (except battery)

See UPS configurator on www.powerwalker.com for detailed backup time information.

Optional Accessories



IEC -> Schuko Converter
Item Nr.: 91015003



2x Yuasa 12V/7Ah battery
Datasheet: [Link](#)
CSB or Panasonic brand can also be used



MBS (Maintenance Bypass Switch)
Datasheet: [Link](#)
Item No.: 10120500